



Southeast Cooler  
Walk-In Cooler & Freezer  
**Heavy Duty Industrial Hardware**

## Standard Walk-In Cooler & Freezer Service Doors

Flush Fitting Frame &  
Door Assembly

Dial Thermometer

Freezer Doors and Frames  
Incorporate Heated Wires

Heavy Duty Hinges With  
Auto-Close Assist

4" Foam In Place  
Urethane Insulation

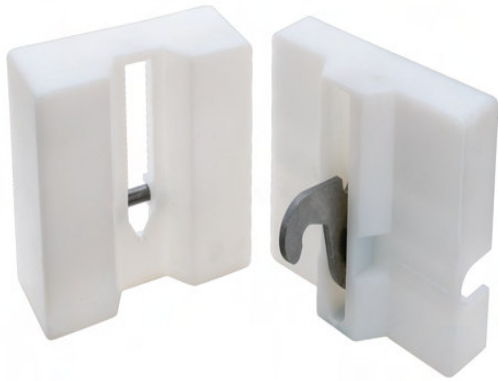
Light Switch With Pilot

Heavy Duty Locking  
Latch & Striker Plate  
With Internal Safety  
Release

Double Door Sweeps  
At Bottom Edge



Standard & Custom Replacement Service Doors Are Also Available



Heavy Duty Panel Fasteners  
Allow for Rapid Panel Assembly

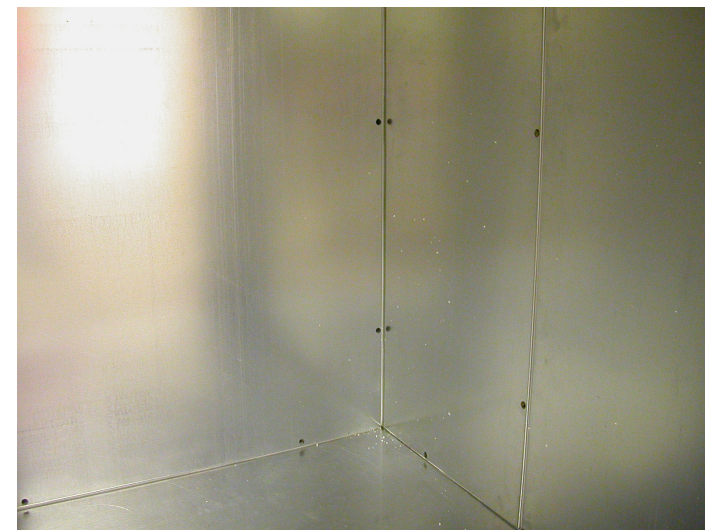
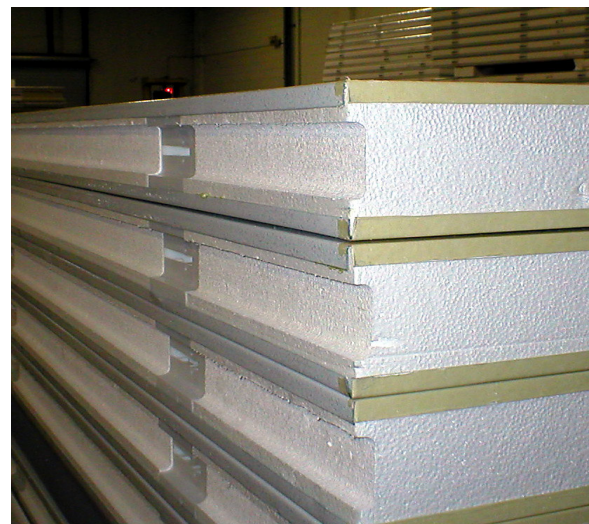
Profiled to Close Tolerance Specifications  
Tongue and Groove Panel Sections Provide  
Excellent Fit & Finish



Cured Metal Clad Surfaces Secure the Panel Fasteners  
Into Each Panel Section – Males and Female Panels

Metal Clad Surfaces are Available in a Variety of Materials

Double Contact Gasket Sealing Reduce Heat Migration







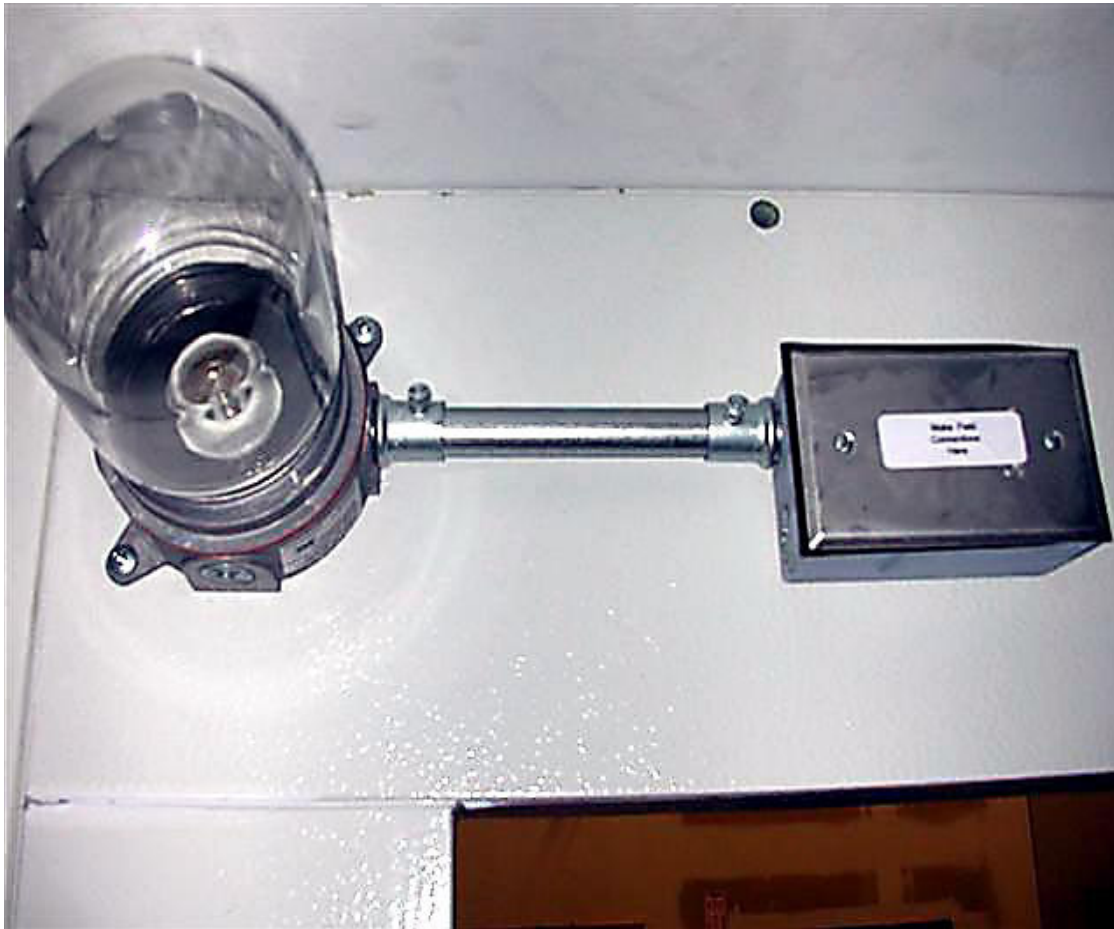
Heavy Duty Chrome Plated Latch, Striker Plates & Interior Release



Large Easy to Read Dial Thermometer Indicates Internal Walk-In & Freezer Temperatures



Heavy Duty Chrome Plated Hinges For Interior & Exterior Doors



**Safety Vapor Proof Lighting**

**Light Switch with Pilot Light**

**Compact Incandescent Fixtures**

**Energy Efficient Low Heat Load  
Fluorescent Fixtures**



# **Pressure Relief Vent Ports**

**Heated Models for Freezers**

**Improves Air-Flow**

**Easier to Open & Close Doors**

**Reduces Pressure Build-Up**

**Compensates for Air Expansion  
& Contractions**







## 2009 Mandated Cooler & Freezer Hardware Includes

### Strip Curtains



### Auto-Assist Door Closers

