

# Ice Max Equipment



A Southeast Cooler Corporation Company  
1520 Westfork Drive  
Lithia Springs, GA 30122

Sold By SISCO

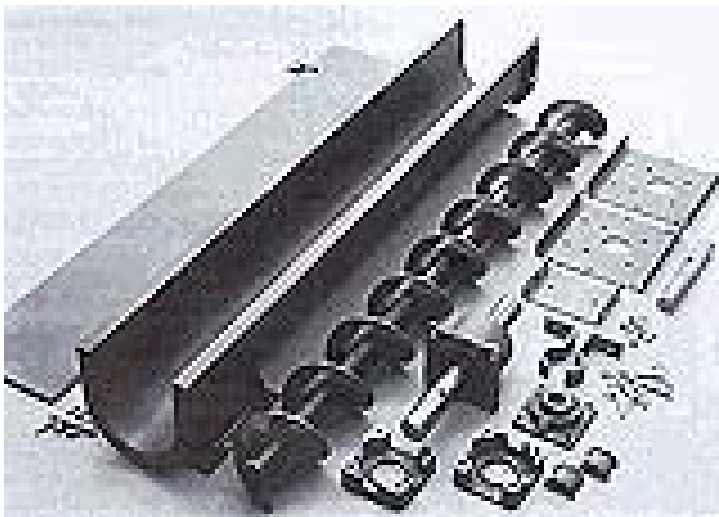
Atlanta Office 770-945-2181

June 2008

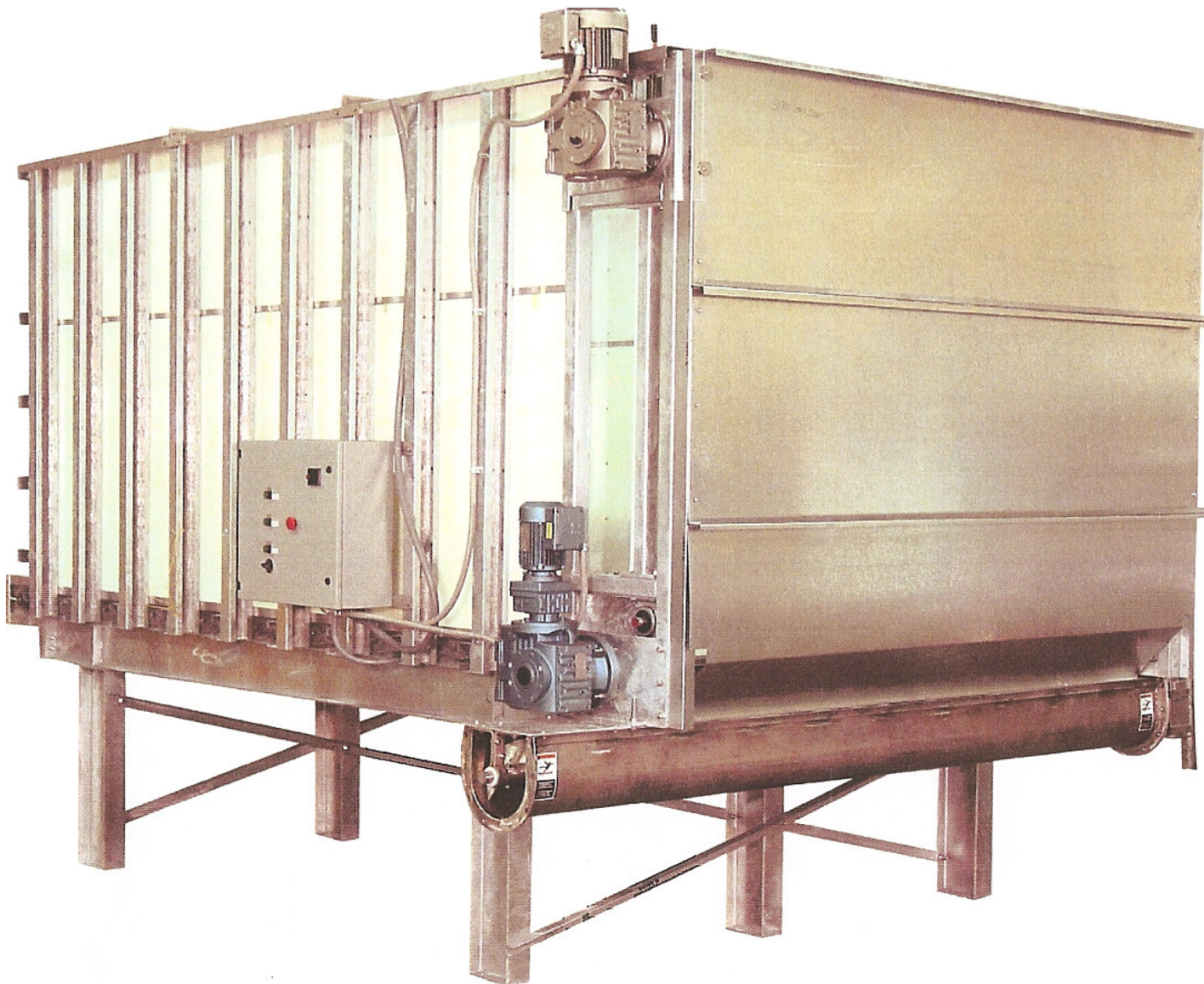
Dallas Office 972-691-4343

## Ice Handling Equipment

- Custom Galvanized Steel and Stainless Steel Screw Augers deliver Ice from the Ice Machine to the Ice Storage Bin. They can also be used to deliver Ice from the Ice Storage Bin to the Bagging Unit.
- \* Ice Snow Reels and Screens to Remove Fines and Improve Finished Product Quality
- Belt Conveyors are available to moved finished product to pallets, freezers or direct to the delivery truck.
- 2 & 4 Wheel Hand Trucks, Pallet Jacks, and Fork Lifts are available to move ice from the production area to the storage freezer, delivery trucks or retail ice merchandisers.



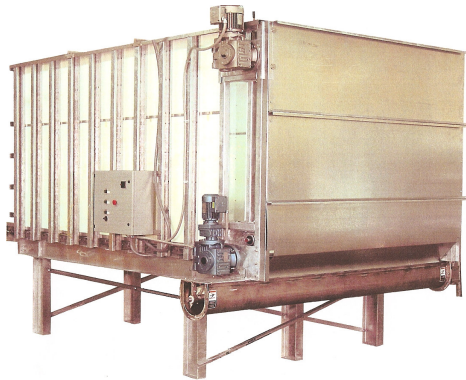
## Medium to High Storage Capacity Ice Bins



Sizes Range from 6 tons to 20 tons of Ice Storage Capacity



## Ice Max - Moving Floor - Automated Ice Storage Bins



<p><b>DIMENSIONS:</b></p>	<p>Standard:              8' 8" Wide (overall width including drives is 10' 8-3/4") x 12' 6" high  <b>6 Ton</b> overall length is 9' 5-1/4"  <b>10 Ton</b> overall length is 13' 5-1/4"  <b>14 Ton</b> overall length is 17' 5-1/4"  <b>16 Ton</b> overall length is 19' 5-1/4"  <b>20 Ton</b> overall length is 23' 5-1/4"              Consult factory for different length and height requirement  <i>These dimensions include overhang of motors, control panel, etc.</i></p>
<p><b>CONSTRUCTION:</b></p>	<p>1/2" UHMW floor              1/2" HDPE on sides and back              Exterior sides, floor and front to be reinforced with galvanized perlin              9" x 9" bin discharge screw, stainless steel, U-trough with gasket at joint, full pitch screw, open end discharge, (1) #226 style hanger with UHMW bearing at discharge end              Four galvanized floor chains with galvanized steel bars              Three vertical galvanized rake chains with galvanized steel rakes              Bin is mounted on 3' legs with feet to allow discharge height for BL style bagger              Three separate drives for floor, rake and screw              Two lexan viewing windows, one on each side of discharge              Control panel</p>
<p><b>ELECTRICAL</b></p>	<p>Drives:              2HP Rake Drive              1HP Floor Drive              1HP Screw Drive              Standard electrical is 230-460/3/60              50 hertz is an available option with upcharge</p>

*Product should be installed in compliance with NEC (National Electric Code), OSHA, anti other regulatory agencies. All specifications are subject to change without notice.*



**Standard:**

8' 8" Wide (overall width including drives is 10' 8-3/4") x 12' 6" high

**6 Ton** overall length is 9' 5-1/4"

**10 Ton** overall length is 13' 5-1/4"

**14 Ton** overall length is 17' 5-1/4"

**16 Ton** overall length is 19' 5-1/4"

**20 Ton** overall length is 23' 5-1/4"

Consult factory for different length and height requirement

*These dimensions include overhang of motors, control panel, etc.*

1/2" UHMW floor

1/2" HDPE on sides and back

Exterior sides, floor and front to be reinforced with galvanized perlin

9" x 9" bin discharge screw, stainless steel, U-trough with gasket at joint, full pitch screw, open end discharge, (1) #226 style hanger with UHMW bearing at discharge end

Four galvanized floor chains with galvanized steel bars

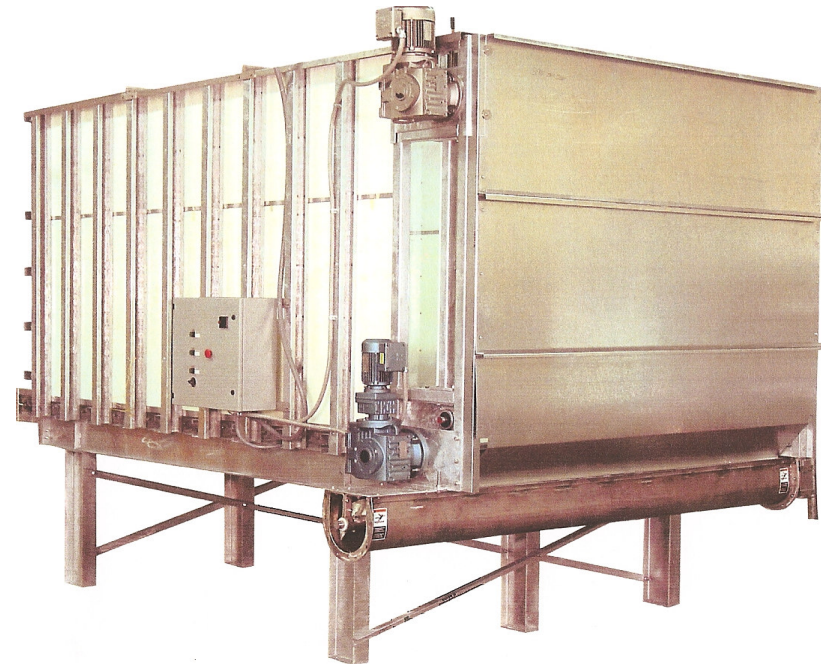
Three vertical galvanized rake chains with galvanized steel rakes

Bin is mounted on 3' legs with feet to allow discharge height for BL style bagger

Three separate drives for floor, rake and screw

Two lexan viewing windows, one on each side of discharge

Control panel



**Drives:**

2HP Rake Drive

1HP Floor Drive

1HP Screw Drive

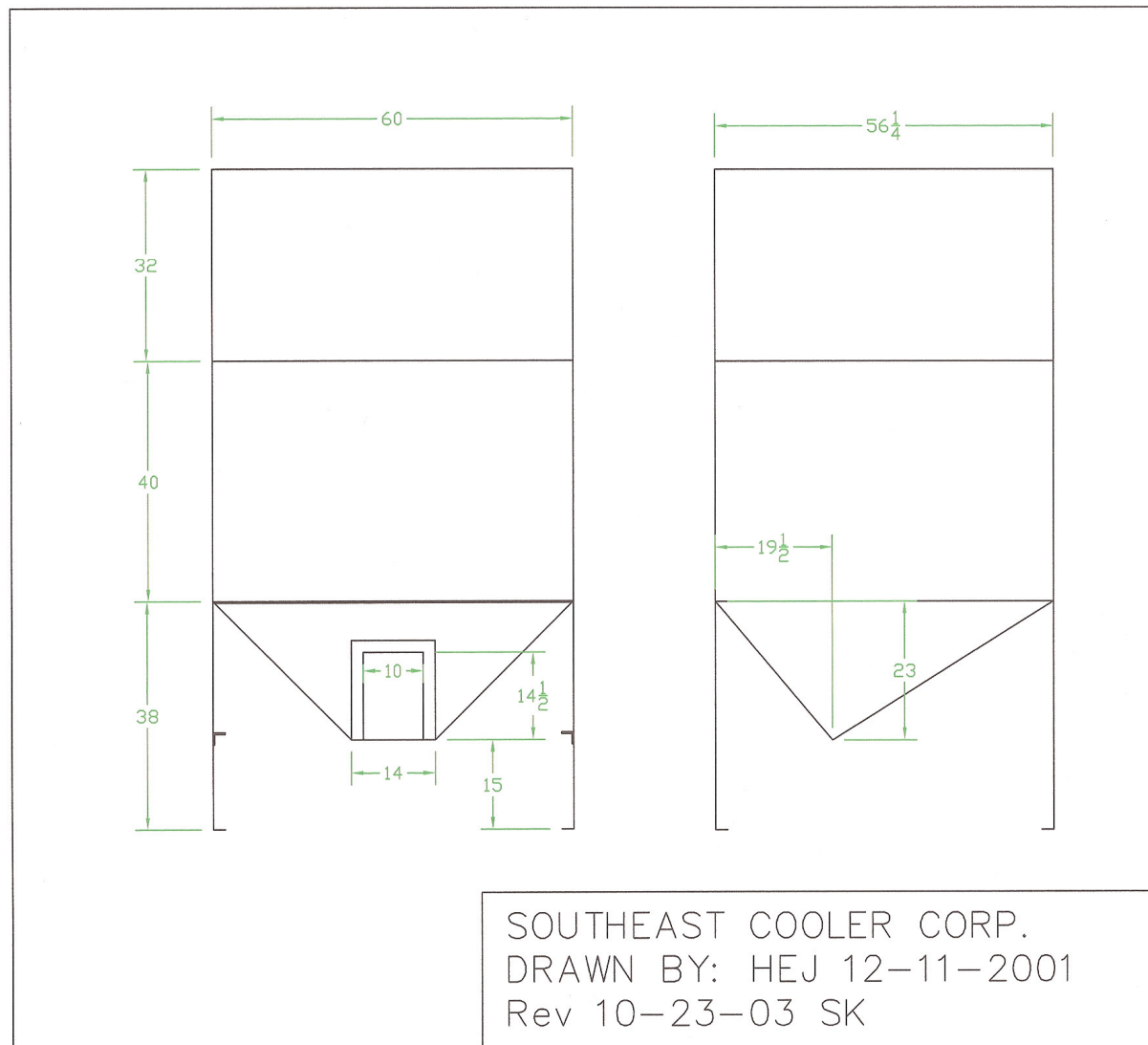
Standard electrical is 230-460/3/60

50 hertz is an available option with upcharge

*Product should be installed in compliance with NEC (National Electric Code), OSHA, anti other regulatory agencies. All specifications are subject to change without notice.*

ICEMAX 1520 Westfork Drive Lithia Springs, Georgia 30122  
San Antonio: 866-256-6548 Fax: 210-659-9488 | Atlanta: 800-241-9778

# Ice Max Gravity Feed Stainless Steel Ice Storage Bin



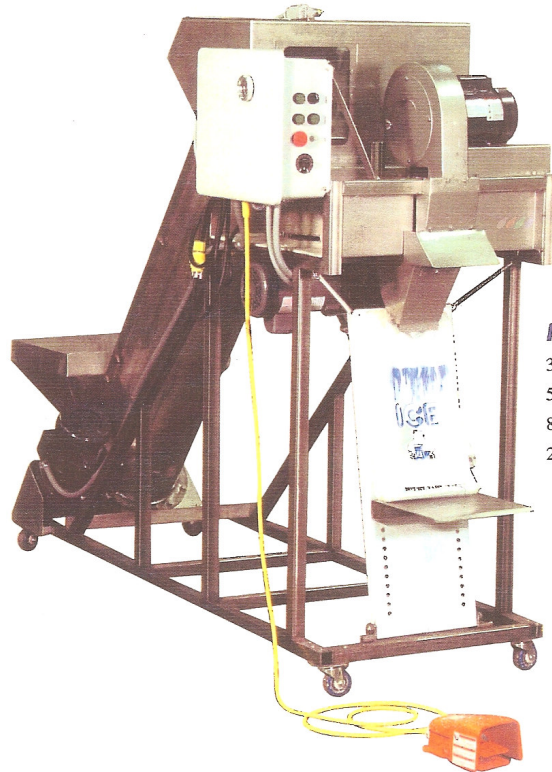
# Bottom Load Volumetric Baggers



**ICE MAX**<sup>®</sup>  
PROCESSING EQUIPMENT



# Bottom Load Volumetric Baggers

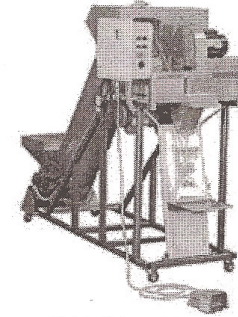


### Models Available:

- 35 .....fills from 3 to 5 pounds per dump
- 510 .....fills from 5 to 10 pounds per dump
- 815 .....fills from 8 to 15 pounds per dump
- 2025 .....fills from 20 to 25 pounds per dump



## BL510 BAGGER SPECIFICATIONS



[Click to Enlarge Picture](#)

<b>DESCRIPTION:</b>	Bottom load volumetric bagger with incline screw standard wicket - loads one wicket of bags  .adjustable speed - approximately 20 - 45 bags per minute
<b>BAG FILL:</b>	Will fill from a 5 pound to a 10 pound bag In a single dump  multiple dump will fill larger bags
<b>DIMENSIONS:</b>	<b>Uncrated:</b> 96" long x 32" wide x 74" high (includes casters)  <b>Uncrated Weight:</b> approximately 850 pounds  .30" from hopper to floor  .24" x 19" bottom hopper  <b>Crated:</b> 101" long x 37" wide x 79" high  <b>Crated Weight:</b> Approximately 980 pounds
<b>CONSTRUCTION:</b>	Stainless Steel  Galvanized Is available
<b>ELECTRICAL</b>	Standard electrical is 115/1/60  Other electrical available - call factory for pricing  50 hertz is an available option with upcharge  UL approved electrical components
<b>AMP LOAD:</b>	30 Amps at 115/1 /60





## BL510 BAGGER SPECIFICATIONS

<b>DESCRIPTION:</b>	Bottom load volumetric bagger with incline screw standard wicket - loads one wicket of bags .adjustable speed - approximately 20 - 45 bags per minute
<b>BAG FILL:</b>	Will fill from a 5 pound to a 10 pound bag In a single dump multiple dump will fill larger bags
<b>DIMENSIONS:</b>	<b>Uncrated:</b> 96" long x 32" wide x 74" high (includes casters) <b>Uncrated Weight:</b> approximately 850 pounds .30" from hopper to floor .24" x 19" bottom hopper <b>Crated:</b> 101" long x 37" wide x 79" high <b>Crated Weight:</b> Approximately 980 pounds
<b>CONSTRUCTION:</b>	Stainless Steel Galvanized Is available
<b>ELECTRICAL</b>	Standard electrical is 115/1/60 Other electrical available - call factory for pricing 50 hertz is an available option with upcharge UL approved electrical components
<b>AMP LOAD:</b>	30 Amps at 115/1 /60
<b>OPTIONS:</b>	Slapper - for drum Wiggler-for hopper Multi Wicket: either "S" hooks or reverse wicket
<i>Product should be installed in compliance with NEC (National Electric Code), OSHA, anti other regulatory agencies. All specifications are subject to change without notice.</i>	
<a href="http://www.icemax.com">ICEMAX 1520 Westfork Drive Lithia Springs, Georgia 30122</a> <a href="tel:866-256-6548">San Antonio: 866-256-6548</a> <a href="tel:210-659-9488">Fax: 210-659-9488</a>   <a href="tel:800-241-9778">Atlanta: 800-241-9778</a>	



# Ice Max Top Load Bagging Machine

**ICEMAX MODEL TLMW510 Stainless Steel  
Multi Size Wicket TOP LOAD BAGGER**



<b>DESCRIPTION:</b>	Top load volumetric bagger Standard wicket - loads one wicket of bags Adjustable speed - approximately 20 - 45 bags per minute
<b>BAG FILL:</b>	Will fill from a 5 pound to a 10 pound bag In a single dump multiple dump will fill larger bags
<b>DIMENSIONS:</b>	<b>Uncrated:</b> 41" long x 32" wide x 78" high (includes casters) <b>Uncrated Weight:</b> approximately 590 pounds Cone shaped top hopper <b>Crated:</b> 46" long x 37" wide x 80" high <b>Crated Weight:</b> Approximately 720 pounds
<b>CONSTRUCTION :</b>	Stainless Steel Galvanized Is available
<b>ELECTRICAL</b>	Standard electrical is 115/1/60 Other electrical available - call factory for pricing 50 hertz is an available option with upcharge UL approved electrical components
<b>AMP LOAD:</b>	20 Amps at 115/1 /60
<b>OPTIONS:</b>	Slapper - for drum Wiggler - for hopper Multi Wicket: either "S" hooks or reverse wicket
<i>Product should be installed in compliance with NEC (National Electric Code), OSHA, anti other regulatory agencies. All specifications are subject to change without notice.</i>	
<p>ICEMAX 1520 Westfork Drive Lithia Springs, Georgia 30122 San Antonio: 866-256-6548 Fax: 210-659-9488   Atlanta: 800-241-9778</p>	



## TL510 BAGGER SPECIFICATIONS

<b>DESCRIPTION:</b>	Top load volumetric bagger Standard wicket - loads one wicket of bags Adjustable speed - approximately 20 - 45 bags per minute
<b>BAG FILL:</b>	Will fill from a 5 pound to a 10 pound bag In a single dump multiple dump will fill larger bags
<b>DIMENSIONS:</b>	<b>Uncrated:</b> 41" long x 32" wide x 78" high (includes casters) <b>Uncrated Weight:</b> approximately 590 pounds Cone shaped top hopper <b>Crated:</b> 46" long x 37" wide x 80" high <b>Crated Weight:</b> Approximately 720 pounds
<b>CONSTRUCTION:</b>	Stainless Steel Galvanized Is available
<b>ELECTRICAL</b>	Standard electrical is 115/1/60 Other electrical available - call factory for pricing 50 hertz is an available option with upcharge UL approved electrical components
<b>AMP LOAD:</b>	20 Amps at 115/1 /60
<b>OPTIONS:</b>	Slapper - for drum Wiggler - for hopper Multi Wicket: either "S" hooks or reverse wicket

*Product should be installed in compliance with NEC (National Electric Code), OSHA, anti other regulatory agencies. All specifications are subject to change without notice.*

[ICEMAX 1520 Westfork Drive Lithia Springs, Georgia 30122](http://www.icemax.com)  
San Antonio: 866-256-6548 Fax: 210-659-9488 | Atlanta: 800-241-9778