



Southeast Cooler Corporation

Walk-In Cooler & Freezer Access Doors Replacement Doors

Southeast Cooler Corporation 1520 Westfork Drive Lithia Springs, GA 30122
1-800-241-9778 (T/F) 1-770-941-6703 (T) 1-770-941-3510 (F)
www.secooler.com

June 2008



Southeast Cooler Corporation - Operational Overview

The Southeast Cooler Corporation was established in 1979 as a regional manufacturer of Refrigerated Walk-In Coolers, Freezers, Vaults, and Cold Storage Structures.

Over the past 29 years the organization has continued to develop several new product lines and expand its manufacturing capabilities.

Throughout the years the company has consistently grown from being a small regional manufacturer to a global provider of commercial and industrial refrigeration equipment.

Encompassing three main buildings the manufacturing facility has grown to over 140,000 feet.

The organization now employs more than 100 dedicated and skilled professionals.

By investing in people and advanced manufacturing equipment the company has become vertically integrated and more cost efficient.

Superior products and total customer satisfaction are our goals. Every step of our design, manufacturing and testing processes contains an intense focus upon true quality control.

Manufacturing Expertise

Design, Development & Execution

CNC Milling Machines

CNC Punch Presses

CNC Press Brakes

CNC Folding Machines

Robotic Welding

Stainless Steel Welding

Material Profiling Equipment

Quality Control & Product Testing Procedures

ETL & NSF Approved Products



Advanced Manufacturing Equipment - CNC Controlled Process Produces a Higher Quality More Cost Effective Fabricated Part



Walk-In Cooler & Freezer Access Service Doors (Replacements)

Manual Access Service Doors

Automatic Access Sliding Doors

Automatic Access Dual Sliding Doors

Custom Access Doors

4" or 6" Thick Polystyrene Insulation Material – Coolers and Medium Temp Applications

4" or 6" Thick Urethane Insulation Material – Freezers and Low Temp Applications

Available Interior & Exterior Surface Materials

Stainless Steel Type 304

Stucco Aluminum Embossed

Stucco White Embossed

Stucco Galvanized Embossed

Smooth Galvanized Flat Finish



Cold Storage Doors (Replacements)

Custom Doors for Coolers & Freezer Applications

Flush Mounted, Flat Frame Mounted, Overlap Mounted and Recessed

Foamed In Place Insulation Materials

Doors are Pre-Hung with Heavy Duty Cam Lift Hinges

Double Sweep Bottom Door Gaskets

Magnetic Gasket Door Gaskets

Heated Door Gaskets for Freezer Applications

Heavy Duty Hydraulic Self-Closing Door Assists

Aluminum Diamond Tread Kick Plates

Heavy Duty Locking Door Latches & Interior Safety Door Releases

ETL Safety Approval Listed





Replacement or Additional Service Doors

4" or 6" Doors for Walk-in Coolers
4" or 6" Doors for Walk-In Freezers

Stucco White Embossed Interior & Exterior

Optional Materials Available

Stainless Steel

Galvanized Steel

Smooth or Raised Stucco Surface Areas





Additional Access or Replacement Doors

Fast & Easy to Install

Positive Sealing Gaskets

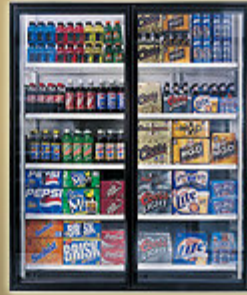
Heavy Duty Hardware

Temperature Indicator

Light Switch



Energy-Free
Designer look



20//20
The Door with
Perfect Vision



H//D
Highest Traffic
Trouble-Free Performance



SST
Gravity-Flow Shelving
Maximum Flexibility



The Latest in Glass Doors

Cooler Glass Doors

Freezer Glass Doors

Lighting Kit Options

Choice of Colors

Choice of Door Styles

High Traffic Beer Cave Doors

Shelving Systems

Heavy Duty Exterior Cold Storage Service Doors

Safe and Secure Access Points
For Refrigerated Spaces

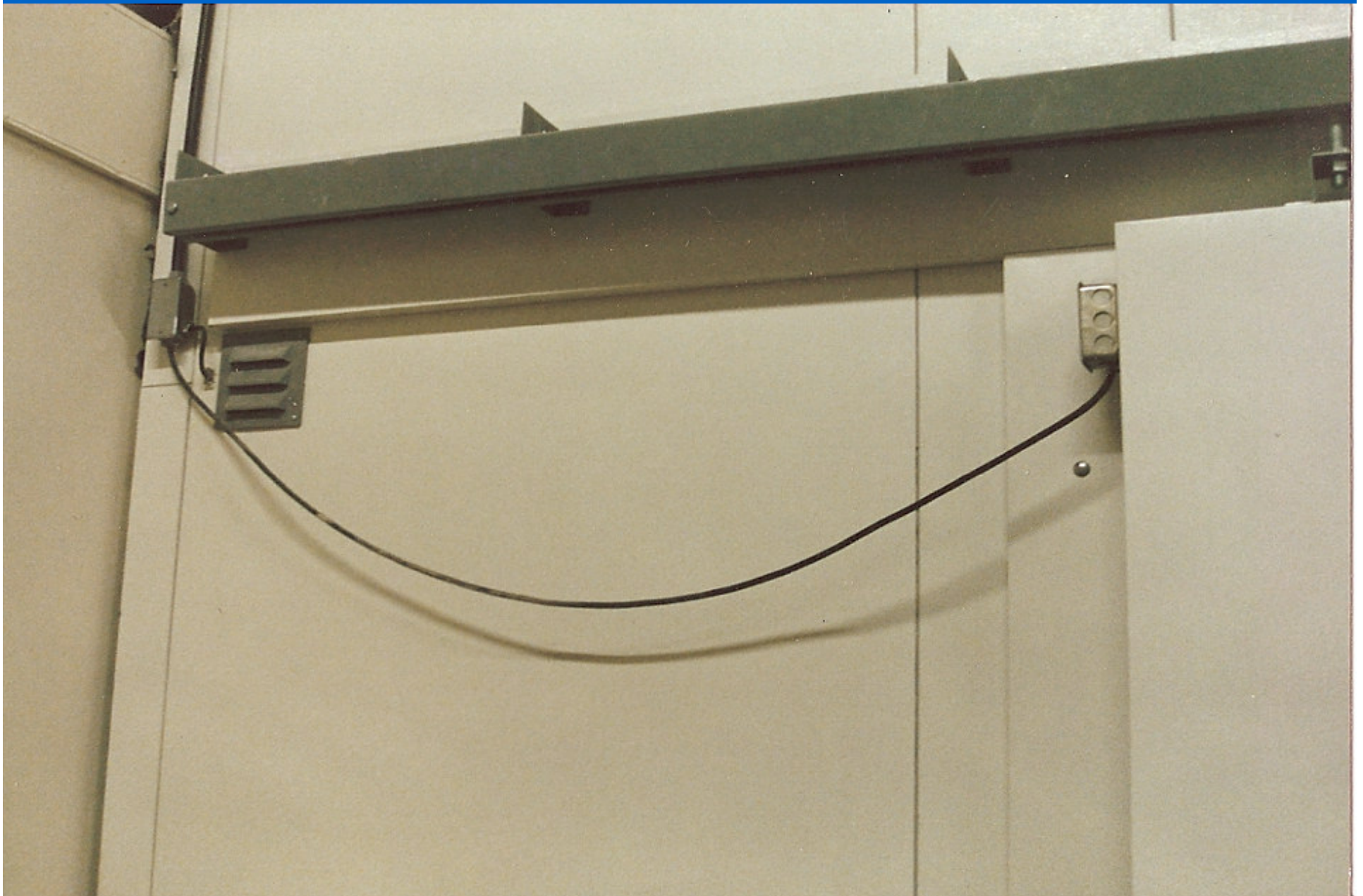
Exterior Flat Panel Door Shown



Walk-In Freezer with (2) Manual Sliding Access Doors



Single and Double Bi Parting Doors Available – Manual or Automatic Opening
Heavy Duty Door Tracks and Drive Assembly 115/1/60 Electrical Required

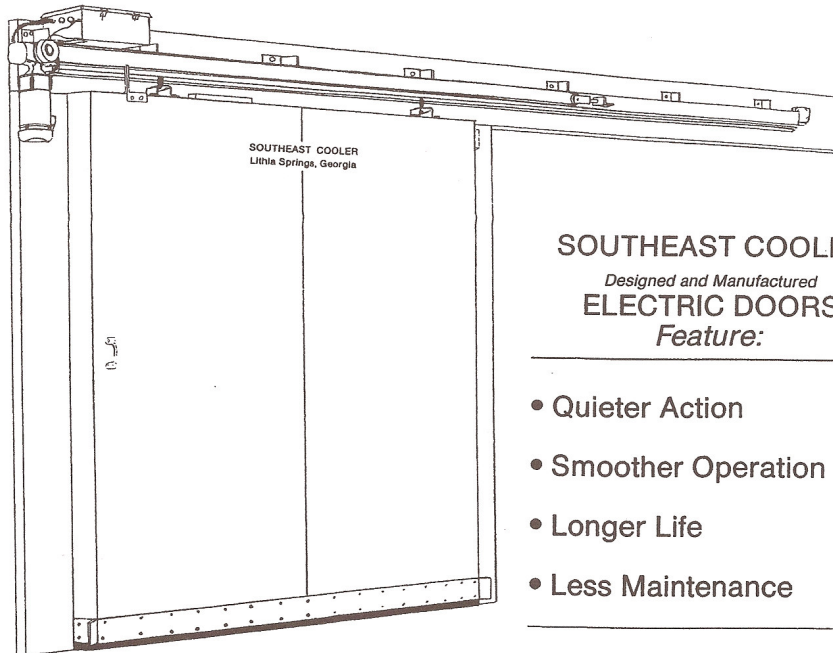


Automatic Sliding Access Service Doors





COLD STORAGE DOORS



SOUTHEAST COOLER
Designed and Manufactured
ELECTRIC DOORS
Feature:

- Quieter Action
 - Smoother Operation
 - Longer Life
 - Less Maintenance
-

COOLER — FREEZER

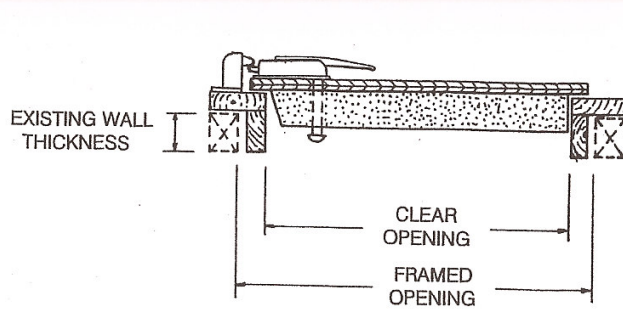
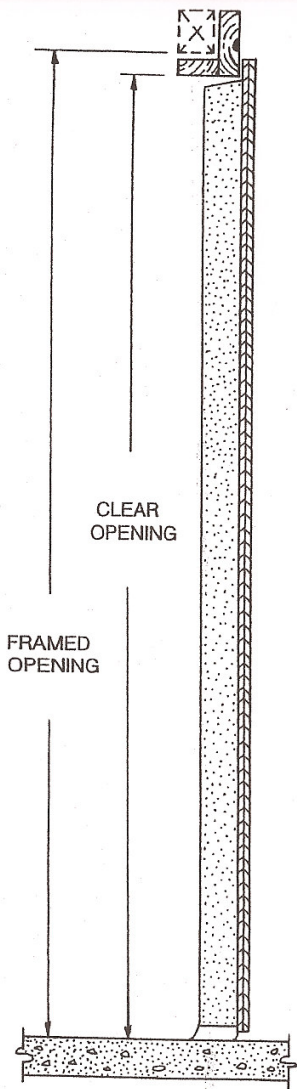
- Manual or Electric HORIZONTAL SINGLE SLIDE
- Manual or Electric Bi-PART SLIDE

**THE KRIEGER "SOFT START"
ELECTRIC SLIDE DOOR PROVIDES:**

- **FAST TRAVEL**
 - 19" per second
 - Faster than most brands
- **AUTOMATIC DISENGAGEMENT**
 - Occurs after each operation
 - Does not require emergency release cable and associated controls
 - Can be manually operated at any time
- **LESS MAINTENANCE**
 - Easy to adjust
 - Fewer moving parts
 - Non-contact limit switches that will not bind, stick, jam or over travel
- **PRINTED CIRCUIT CONTROL BOARD**
 - Designed to exceed one million (1,000,000) maintenance free cycles.
 - Patent pending

OTHER FEATURES:

- **HEATER WIRE**
 - Long life
 - Self regulating
 - Requires no rheostat or controls
 - Guaranteed for ten years
- **FACINGS**
 - 26 gauge mill finish GALVANIZED STEEL (WHITE optional)
 - .032 stucco embossed ALUMINUM (WHITE optional)
 - 22 gauge STAINLESS STEEL
 - Other thicknesses and finishes are available
- **INSULATION**
 - 4" and 6" STYRENE
 - 4" and 6" URETHANE
- **SIZES**
 - 4' x 7' to 10' x 12' standard
 - Custom sizes available



Ordering Information

Door Size: Width x height
Thickness: 4" or 6"
Existing wall thickness: 4" standard, others available.
Insulation: Styrene or urethane
Application: Cooler or freezer
Hinge: Right or left
Finish: Galvanized steel
 White painted galvanized, stucco embossed
 Aluminum, stucco embossed
 Stainless steel

Installation procedure

Provide framed opening of sufficient strength to support door weight. Opening must be plumb and square.
 Set door frame in bed of non-hardening, waterproof caulk. Mount frame plumb and square. Check that casings are in a true plane with one another. Set frame at correct height to provide a positive seal between sweep and floor.
 Seal mounting bolt penetrations and caulk joints between frame and walls.

Standard Door Sizes

Door size	Clear opening	Framed opening
36 x 79	33 x 77 ¹ / ₂	36 ¹ / ₂ x 79 ¹ / ₄
48 x 79	46 x 77 ¹ / ₂	48 ¹ / ₂ x 79 ¹ / ₄
54 x 79	51 x 77 ¹ / ₂	54 ¹ / ₂ x 79 ¹ / ₄
60 x 84	57 x 82 ¹ / ₂	60 ¹ / ₂ x 84 ¹ / ₄

Custom sizes available!



Sales Office Locations & Contact Information

Dedicated and Experienced Team Members are Ready to Assist You

Bruce Denson 1520 Westfork Drive Lithia Springs, GA 30122 (T/F) 800-241-9778 (E) bdenson@secooler.com

Heather Jones 1520 Westfork Drive Lithia Springs, GA 30122 (T/F) 800-241-9778 (E) hjones@secooler.com

Jon Noble 2201 Long Prairie Rd. Suit 107 Flower Mound TX 75022 (T/F) 877-567-6253 (E) jnoble@secooler.com

Please Feel Free to Visit us at Southeast Cooler www.secooler.com

Or Contact us at sales@secooler.com